



Configuring Element consoles for use with the Telos VX VoIP Talkshow System

27 July, 2011

Introduction

This document will help you configure your Axia Element console for use with the Telos VX broadcast VoIP telephone system. If you have not yet configured your VX system, please refer to the Telos VX User Manual to do so before proceeding.

You will need to know the following things in order to configure Element for use with your VX system:

1. The IP address of your VX Engine
2. The user name and password of your VX Engine
3. The name of the VX Studio to which you wish to connect
4. The names and channel numbers of the VX hybrids and Livewire outputs you wish to use in-studio
5. Optional, should you wish to load different VX Shows using your Element console: the VX Show names you wish to load

The major change to Element / VX configuration is that the IP address of your VX system must be entered in the *Phone* section of your Element or PowerStation Show Profile, instead of in the *Phone Channel* section as was previously required. In order to correctly control your VX, your Element and/or PowerStation must be upgraded with new software. Software packages that implement this change begin with the following versions:

- PowerStation: v1.1.3a
- Element: v2.5.0.3

To obtain the latest software, please visit www.AxiaAudio.com/downloads/ and follow the update instructions contained in the accompanying Release Notes prior to proceeding with this configuration document, if you have not already done so.

Configuration

Connecting to VX

Open the Element's *Module Manager/Phone Channels* web page. If you have the Call Controller module installed, you will see the following at the top of the screen:

Phone channel configuration:

ID	Module	Server Address	Login	Password
1	3:4	<input type="text"/>	<input type="text"/>	<input type="text"/>

If you don't see this, or if the ID or Module information is incorrect, you will need to "Capture" your current module configuration. This is normally done at the factory, but if you have added the phone module yourself, you will need to execute the Capture so that the Element can "see" the newly added module.

To Capture, press and hold the *Help* key on Element's Navigation Module for 5 seconds, until CAPTURE appears in the source name displays. On the phone module, you will see the assigned ID number in the upper left line icon position. You can change this by pushing the adjacent line button. End Capture Mode by pressing the *Enter* key on the Navigation Module.

Configuring an Element Show Profile for use with VX

Note: Entry of your VX's IP address in Phone Channel screen is no longer required. (At present, this screen is left in the Element Control Center so that you can see the Connection status of your VX.) The VX IP address is now stored in Element's Show Profile settings, allowing you to create different show profiles that connect to different VX Engines.

Show profile 'VX9'. Phone configuration:

Phone Module 1

Phone Url {vx:[ap: {}][user[:pass]@]host} vx:192.168.0.9

Show Name:

Host / Studio Name:

Show Password:

Reversed Hybrid (1st on right)

Mode: Auto
 12 Lines
 24 Lines

- 1. Enter your VX's IP address.** Use your Web browser to navigate to Element's *Sources and Profiles* → *Configuration* → *Show Profiles* web page. Select the Element Show Profile you wish to configure, and click on *Phone*.

In the *Phone URL* field, enter the IP address of your VX. In the screenshot above, a VX IP address is shown as

vx:192.168.0.9

where 192.168.0.9 is the IP of a VX Engine. You can also specify a username and password if needed. (If you use the default settings, where the username is "user" and the password is empty, you don't need to enter anything.)

- 2. Configure your VX Studio and Shows.** In the same screen where you entered VX IP number, you can enter a VX Studio name. In the *Host /Studio Name:* field, simply enter the studio name you used in your VX's configuration. In the example above, the VX Studio name is "Studio 1."

If you wish to change a VX Show using an Element Show Profile, simply specify the name of the VX Show you wish to load in the *Show Name* field. If you leave it empty, no VX Show will be changed, and whichever show is currently loaded will continue to be used. Leave the *Show Password* field empty. There are no passwords for Shows in the Telos VX.

- 3. Configure other options.** Element’s Call Controller module uses the left row of telephone line selection buttons to control Hybrid 1, the right row to control Hybrid 2. If you wish to use the right row of Call Controller buttons to control Hybrid 1 and the left row to control Hybrid 2, click the *Reversed Hybrid* box.

VX can be used in either 12 or 24 line mode. You can select either *Auto*, *12 Lines* or *24 Lines* with the Mode Selection radio buttons. In 12 line mode, 12 lines are displayed on both columns of the Call Controller module; the left key bank answers lines on Hybrid 1, the right keys answer lines on Hybrid2. In 24 line mode, both left and right key banks will answer lines using Hybrid 1. To answer lines on any other hybrid, operators will use the module’s *SET* key to choose which hybrid to use. Selecting “Auto” uses the configuration of the VX Show to dynamically set the number of lines used.

- 4. Click “Save” when done.**

Note: After editing and saving a Show Profile, you must reload it from your Element console in order for changes to take effect.



TelosVX Control Center

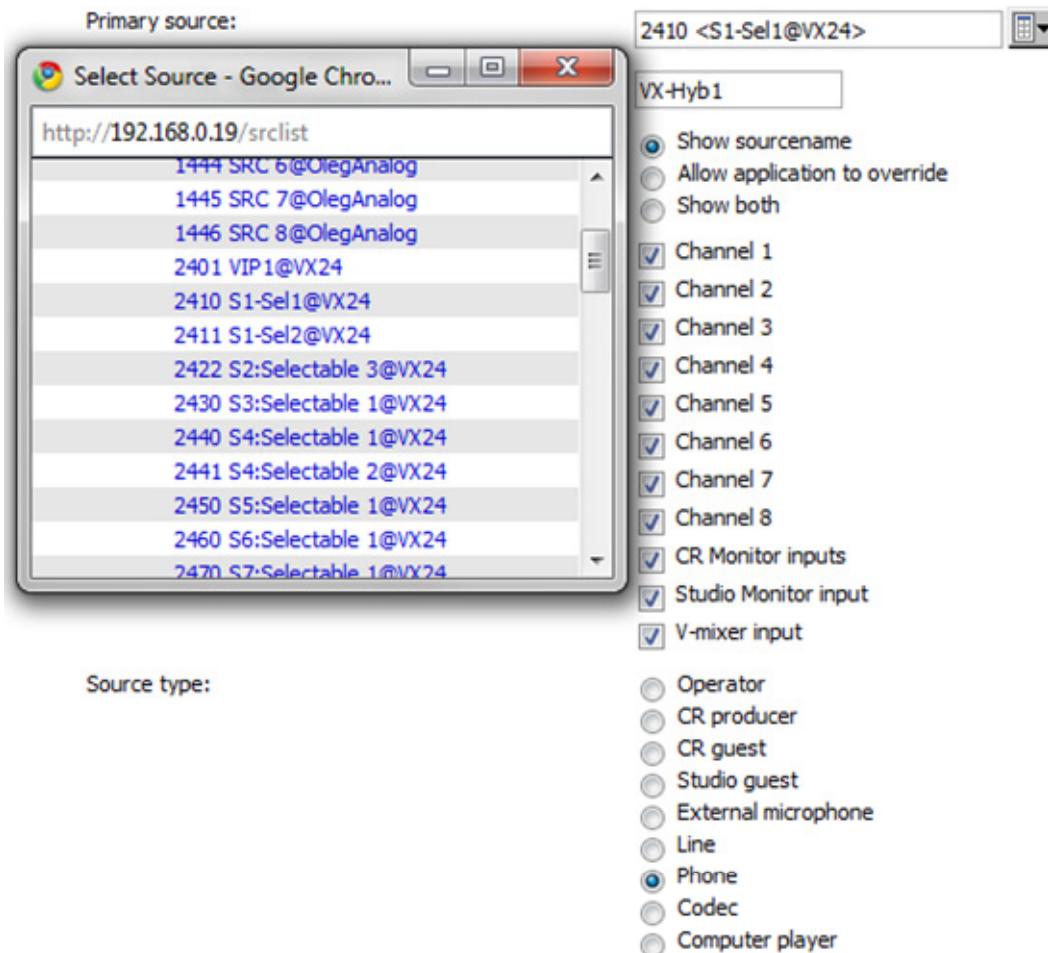
Studio Configuration

Studio Name	Fixed Channels	Selectable Channels	Active Show	
Studio 1	4	4	Show 1	Delete
Load test #1	10	0	No show	Delete
Load test #2	10	0	No show	Delete
ISDN #1	0	2	No show	Delete
ISDN #2	0	2	No show	Delete
ISDN #3	0	2	No show	Delete

Add New

Configuring an Element Source Profile for use with VX

In the Element Control Center, navigate to *Source Profiles*. Click *New Source Profile* and, using the *Primary Source* drop-down box, select the audio channel that you configured in VX Engine under Studio configuration. In the list, you should see a Livewire channel number and short description of the Hybrid; give it an Element source name, such as “VX-Hybrid1,” and select *Phone* for Source Type.



The Source Profile for the hybrid should be filled in as follows:

- Leave the *Phone hybrid IP* field empty.
- Leave the *Phone line* and *Phone hybrid (for NX12)* fields at their default value of “0.”
- Use 2nd show (*split mode for NX12*) should be left unchecked.

Phone hybrid ip:	<input type="text"/>
Phone line:	<input type="text" value="0"/>
Phone hybrid (for Nx12):	<input type="text" value="0"/>
Use 2 nd show (split mode for Nx12):	<input type="checkbox"/>
Phone Module ID:	<input type="text" value="1"/> ▼
Hybrid Nr. (0 - None):	<input type="text" value="1"/>
Conferencing allowed:	<input type="text" value="No"/> ▼
Fixed line (1 to 24, 0 - No):	<input type="text" value="0"/>

- The *Phone Module ID* field lets you select from the multiple phone modules that you may have installed. Normally, you will have just one, so select 1 from the drop-down box.
- For *Hybrid Nr.* select the hybrid that corresponds to the Primary Source audio you selected above. Telos VX supports unlimited number of hybrids per studio. To find out what Hybrid number corresponds to the audio source you selected, go to the VX Engine/Studio configuration page and check the sequence number of the *Selectable LW* channel that you are using as the audio source here. The first Selectable LW channel counts as Hybrid 1.
- *Conferencing Allowed* lets you permit “button mash” conferencing. Unless you specially wish to prohibit this type of conferencing, select Yes from the drop-down box.
- *Fixed Line* lets you assign a line permanently to a specific fader channel, emulating a dedicated hybrid. Normally this is used with a 4-Fader Module. If you wish to use a Hybrid in this mode, specify one of your VX system’s “fixed” hybrids in the *Primary Source* field. In the VX Engine studio configuration, you configure both fixed and selectable hybrids; enter a Fixed Hybrid number in this field if you wish to associate this source with a Fixed Hybrid.

The other fields in the Source Profile page are non-phone specific, and may be configured as you wish. Repeat this procedure to create a source profile for each hybrid in your studio.

You’ll now need to load the hybrid sources onto the fader channels. This can be done either manually, or automatically using Show Profiles. Naturally, we recommend that you make this assignment in each Show Profile which will use

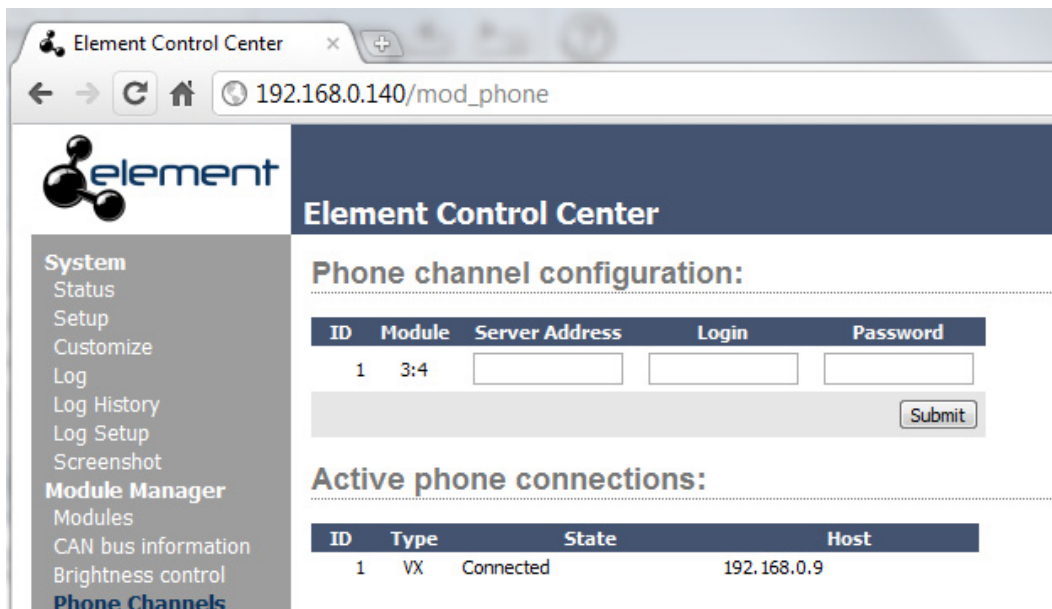
the phone system, since leaving manual assignment to air talent is asking for trouble!

For normal operation, you will assign Hybrid 1 to the left fader channel of the Call Controller, and Hybrid 2 to the right fader channel. Additional hybrids, if you have them, may be assigned to any channel on a 4-Fader Phone Module.

Note: Within Element, each incoming “phone” type audio source has an associated backfeed for automatic mix-minus generation. There are several user configuration options that affect which audio sources are fed to the hybrid under various conditions; please refer to the “Source Profile Options” and “Feed To Source Mode” sections of the Element 2.0 User’s Manual.

Activate configuration

When you are done entering configuration, save your Show and Source profiles, and load one of your newly-edited Show Profiles using your Element console. You can use the Element Control Center *Phone Channels* page to confirm your VX connection, as shown below:



If you have questions or need assistance, please contact Axia Support at Support@AxiaAudio.com.