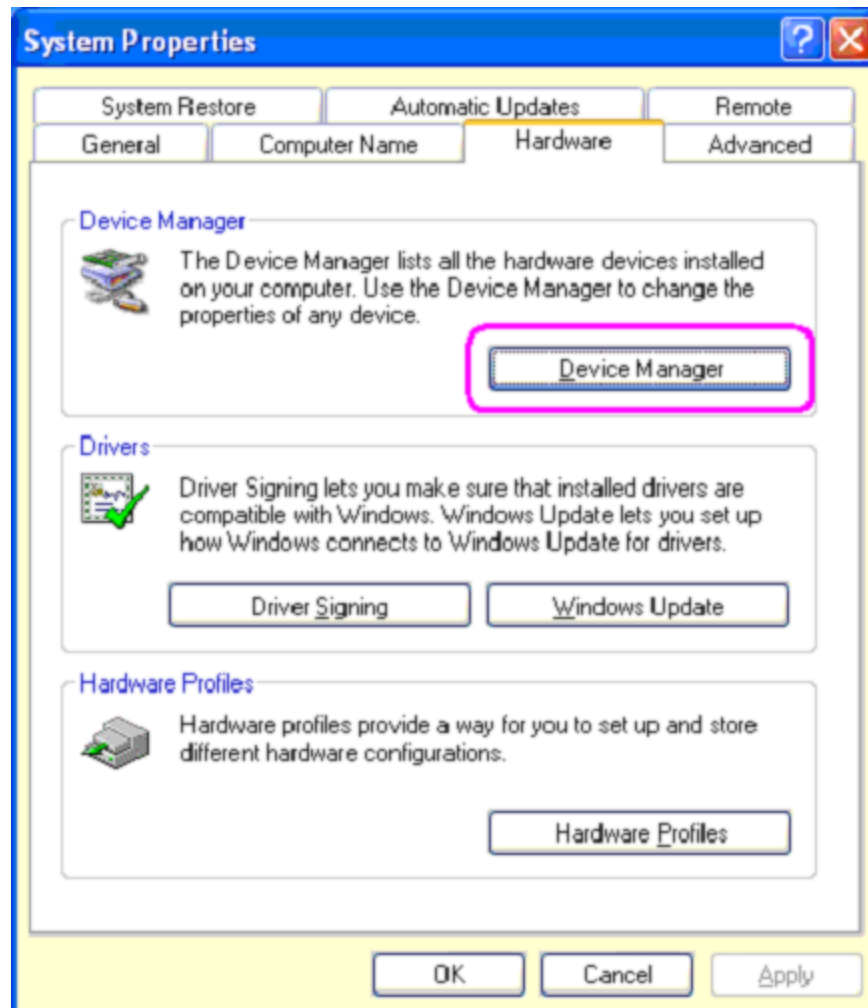
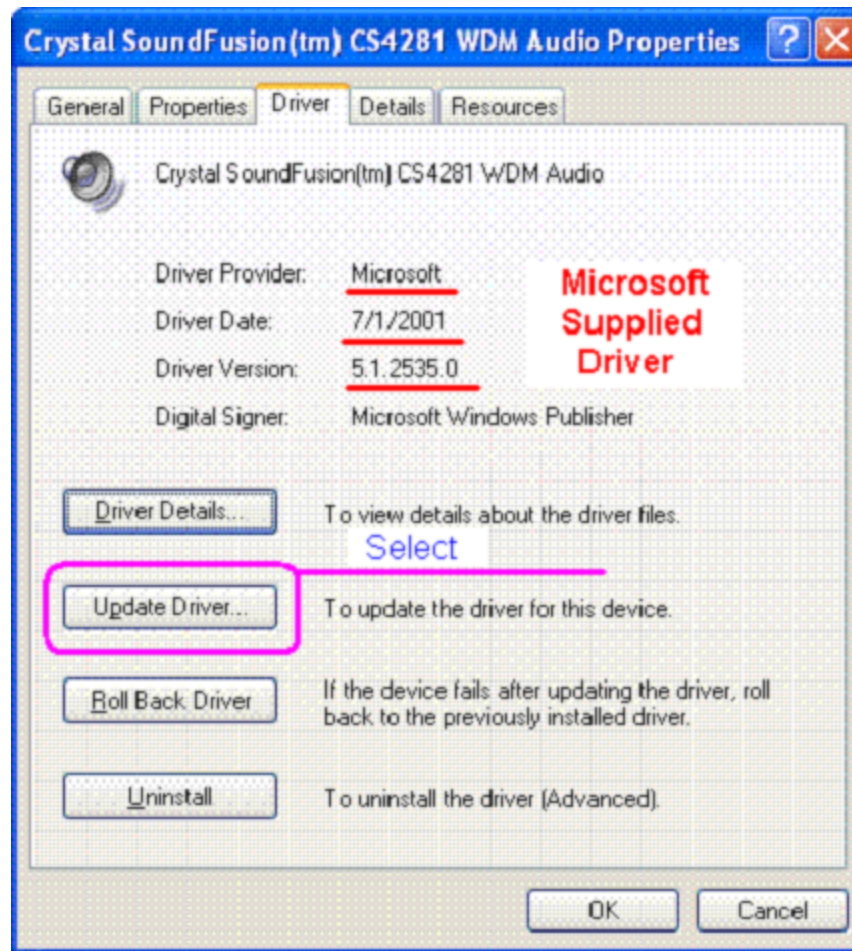


Windows XP SP2- Profiler Manual Driver Update Procedure

- 1.) From the Control Panel, open up your System Properties and navigate to your Hardware tab. Select DEVICE MANAGER and open up your list of devices installed on your computer.



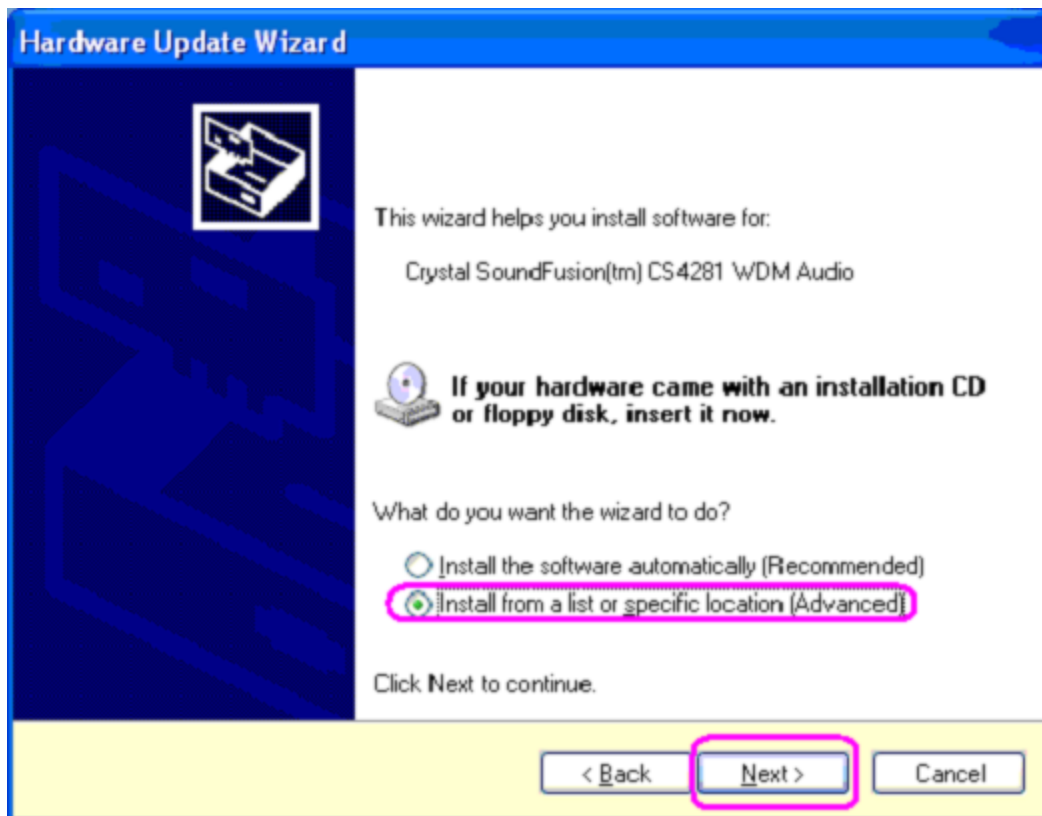
- 2.) Navigate your hardware tree to your "Sound, video and game controllers". Expand the tree and select the "Crystal SoundFusion(tm) CS4281 WDM Audio" card. Right Click on the device and select "Update Driver..." or you can open its properties and navigate to the DRIVER tab and select "Update Driver...":



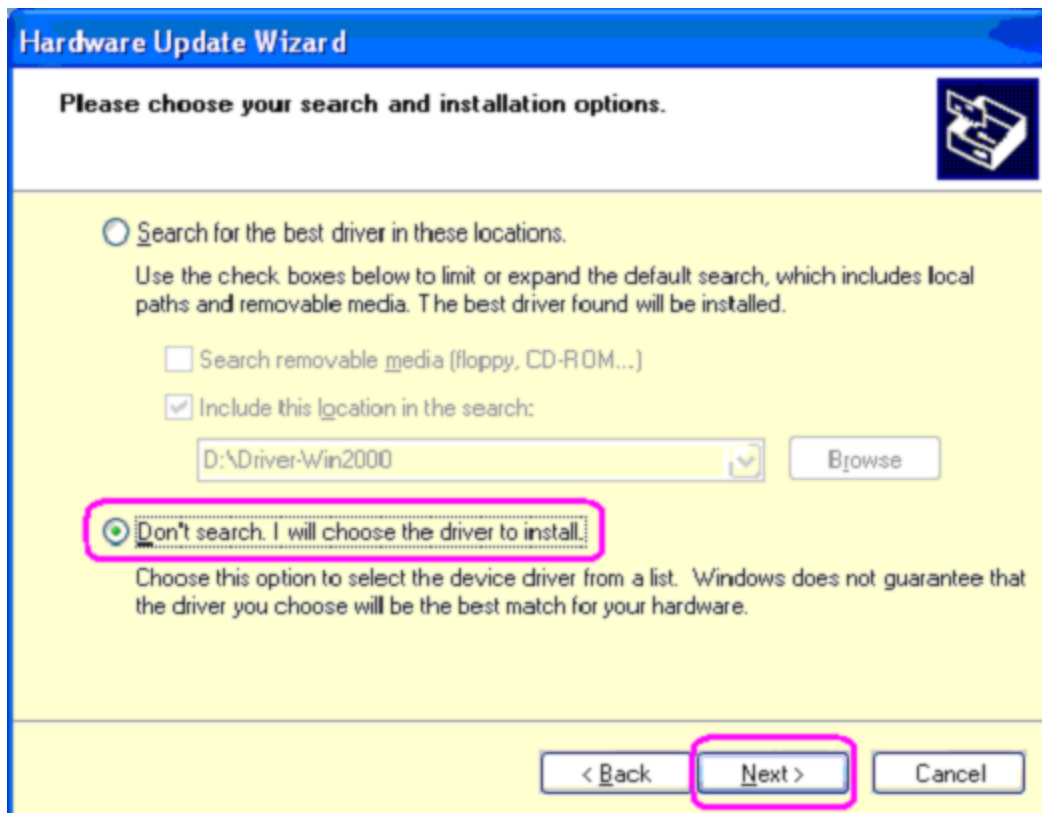
3.) The Hardware Update Wizard begins. Windows prompts you to allow it to "automatically" search for a driver. Select "No, not this time" and press NEXT:



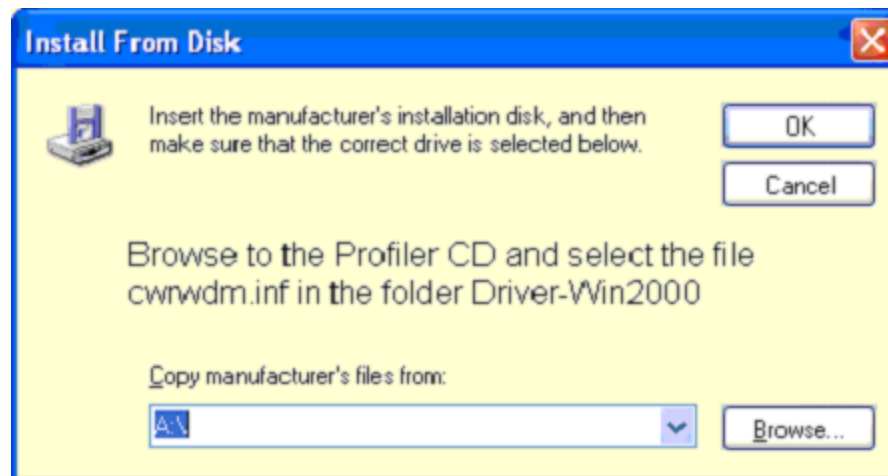
4.) Select "Install from a list or specified location (Advanced)" and press NEXT:



5.) In the Search Options select "Don't Search. I will choose the driver to install" and press NEXT:



6.) Select "HAVE DISK" and press NEXT.



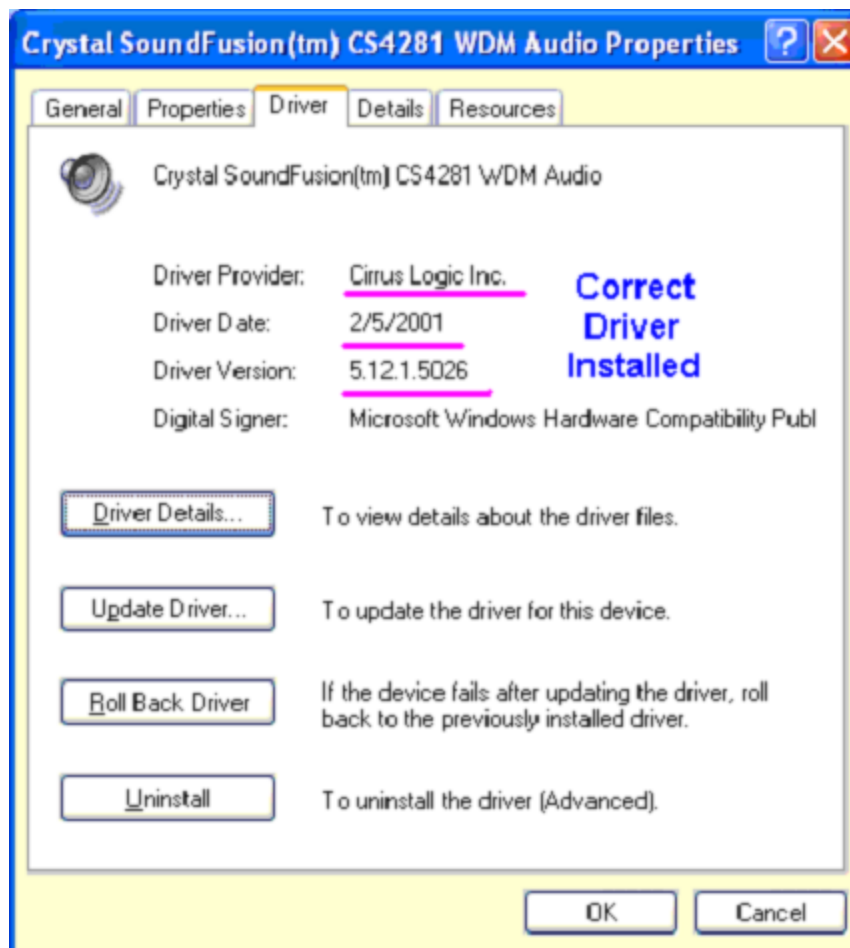
7.) Browse to the Profiler CD and the folder "DriverWin2000" and select the file "cwwdm.inf" then press OK:

Highlight the Driver "Crystal SoundFusion(tm)..." option in the Model choices (should be only one listed) and press NEXT.

8.) Windows will begin installing the driver. During the installation you will get a warning message that the driver has not passed Windows Logo testing. Select "Continue Anyway":



9.) Once the driver installation is complete return to the audio card's properties in Device Manager and view the Driver Tab and verify the driver provider says Cirrus Logic, the date should be 2/5/2001 and the driver version is 5.12.1.5026.



10.) Repeat this process for any additional Profiler cards installed and then reboot the PC.